

Measure ► Align ► Fixate ► Install ► Osteotomize

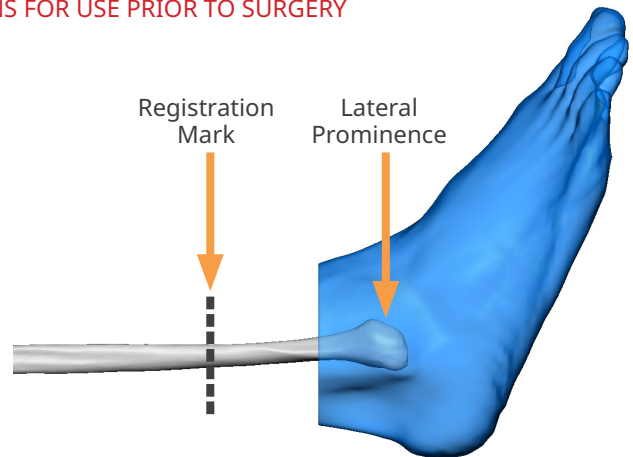
CONSULT ALL APPLICABLE INSTRUCTIONS FOR USE PRIOR TO SURGERY

Step 1: Measure and Mark Fibula

- i. Confirm that the work order number and patient name on the Fibula Cutting Guide are correct.
- ii. Measure from the lateral prominence to the registration mark.

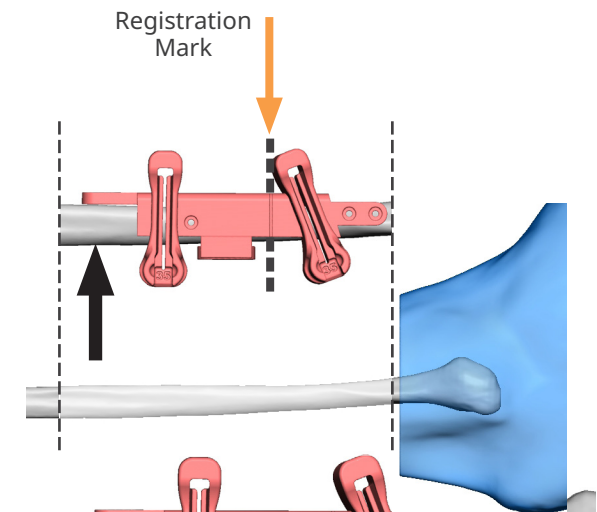
Note: The Fibula Cutting Guide is physically labeled with this distance. Refer to the Fibula Cutting Guide page in the Case Report for case-specific measurements.

- iii. Mark the fibula at this location.



Step 2: Prepare Fibula Free Flap and Align

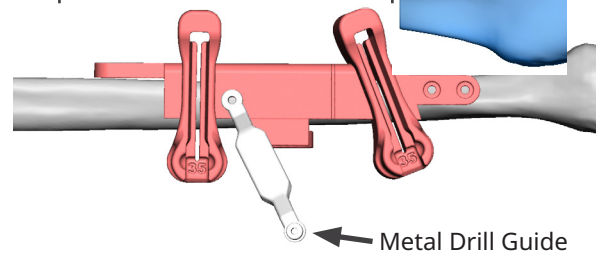
- i. Prepare the Fibula Free Flap.
- ii. Align the registration mark on the Fibula Cutting Guide to the location marked on the patient's fibula to match the simulated plan. Adjust the guide location, if applicable.



Step 3: Fixate Fibula Cutting Guide

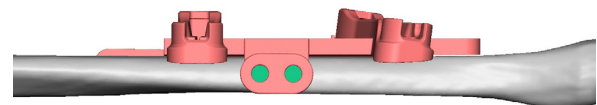
- i. Insert the Metal Drill Guide into the drill sleeves on the Fibula Cutting Guide and pre-drill the fixation holes.
- ii. Fixate the Fibula Cutting Guide using all provided fixation holes, distal tab fixation holes may be unnecessary.

Note: Refer to the Metal Insert Instructions in the Case report for drill bit and screw sizing.



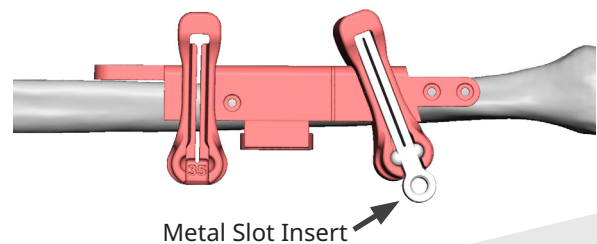
Step 4: Install Dental Implants

- i. Install the dental implants per manufacturer guidelines.
- Note: Guide can only be used with guided dental implant systems. Guide designed per implant system specifications.*



Step 5: Perform Osteotomies

- i. Fit the Metal Slot Insert into the provided slots in the Fibula Cutting Guide.
 - ii. Perform the osteotomies.
 - iii. Remove the Fibula Cutting Guide.
- Note: Use the Metal Slot Insert size indicated on the Fibula Cutting Guide and shown in the Case Report.*



A surgeon must always rely on his or her own professional clinical judgment when deciding whether to use a particular product when treating a particular patient. 3D Systems does not dispense medical advice and recommends that surgeons be trained in the use of any particular product before using it in surgery. The information presented is intended to demonstrate the breadth of 3D Systems product offerings. A surgeon must always refer to the package insert, product label, and/or instructions for use before using any 3D Systems product.