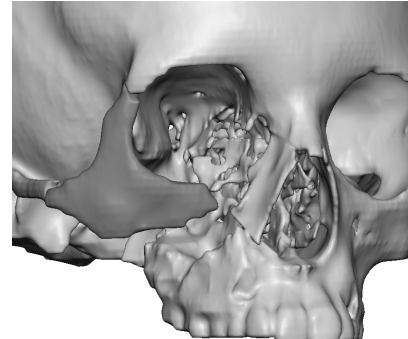


**Place ▶ Mark ▶ Osteotomize ▶ Align**  
 CONSULT INSTRUCTIONS FOR USE PRIOR TO USING GUIDES

**Step 1: Place Maxillofacial Marking Guide**

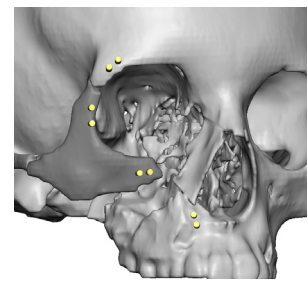
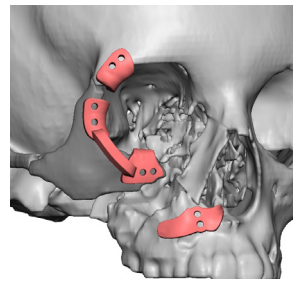
- i. Confirm that the work order number and patient name on the Maxillofacial Marking and Positioning Guides are correct.
- ii. Ensure that the tissue is removed from the bony surface where the Maxillofacial Marking Guide will register.
- iii. Place the Maxillofacial Marking Guide and ensure that the guide is contacting the bony surface.

*Note: Refer to the Case Report for patient-specific guide position.*



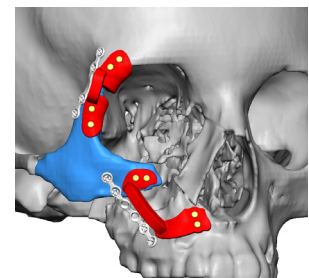
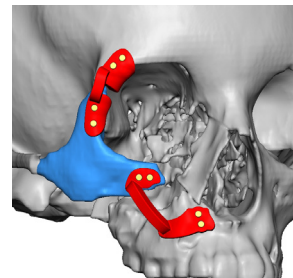
**Step 2: Mark Registration Holes**

- i. Mark the registration holes.
- ii. Mark the osteotomies along the indicated path, if applicable.
- iii. Remove the Maxillofacial Marking Guide.



**Step 3: Perform Osteotomies**

- i. Perform the necessary osteotomies, if applicable.



**Step 4: Align with Maxillofacial Positioning Guide**

- i. Align the registration holes on the Maxillofacial Positioning Guide to the marked locations on the bony segments and fixate.
- ii. Permanently fixate the stock plate(s).
- iii. Remove the Maxillofacial Positioning Guide.

