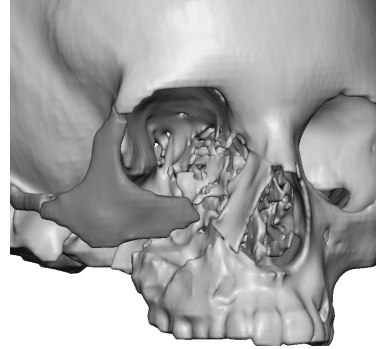


**Place ► Mark ► Osteotomize ► Fixate**  
CONSULT ALL APPLICABLE INSTRUCTIONS FOR USE PRIOR TO SURGERY

**Step 1: Place Maxillofacial Marking Guide**

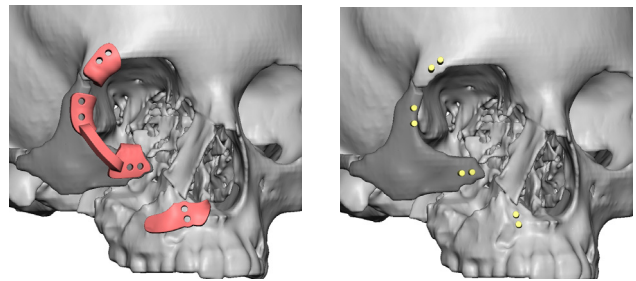
- i. Confirm that the work order number and patient name on the Maxillofacial Marking Guides are correct.
- ii. Ensure that the tissue is removed from the bony surface where the Maxillofacial Marking Guide will register.
- iii. Place the Maxillofacial Marking Guide and ensure that the guide is contacting the bony surface.

*Note: Refer to the Case Report for patient-specific guide position.*



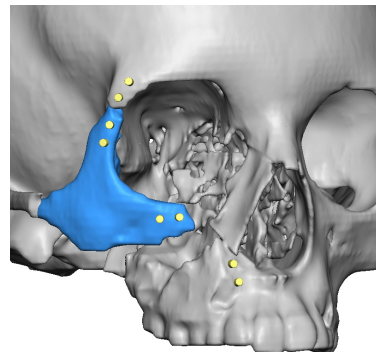
**Step 2: Mark Predictive Holes**

- i. Mark the predictive holes.
- ii. Mark the osteotomies along the indicated path, if applicable.
- iii. Remove the Maxillofacial Marking Guide.



**Step 3: Perform Osteotomies**

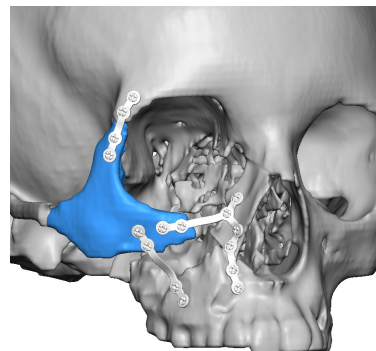
- i. Perform the necessary osteotomies, if applicable.



**Step 4: Position Maxillofacial Segments and Fixate**

- i. Align the **Facial iD** plate with the predictive holes on the marked locations on the Maxillofacial segments and on the midface.
- ii. Permanently fixate the segments using the **Facial iD** plate.

*Note: Refer to the Stryker IFU and case-specific Design Proposal for screw selection.*



A surgeon must always rely on his or her own professional clinical judgment when deciding whether to use a particular product when treating a particular patient. 3D Systems does not dispense medical advice and recommends that surgeons be trained in the use of any particular product before using it in surgery. The information presented is intended to demonstrate the breadth of 3D Systems product offerings. A surgeon must always refer to the package insert, product label, and/or instructions for use before using any 3D Systems product.