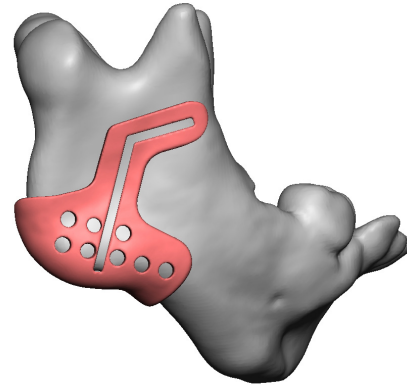


Place ► Mark ► Osteotomize ► Fixate
CONSULT ALL APPLICABLE INSTRUCTIONS FOR USE PRIOR TO SURGERY

Step 1: Place Distractor Marking Guide

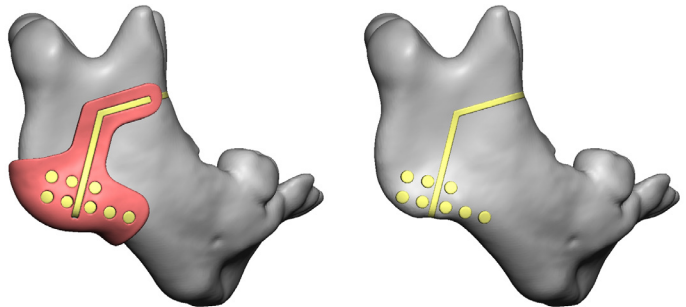
- i. Confirm that the work order number and patient name on the Distractor Marking guide are correct.
- ii. Ensure that the tissue is removed from the bony surface where the Distractor Marking Guide will register.
- iii. Place the Distractor Marking Guide and ensure that the guide is contacting the bony surface.

Note: Refer to the Case Report for patient-specific guide position.



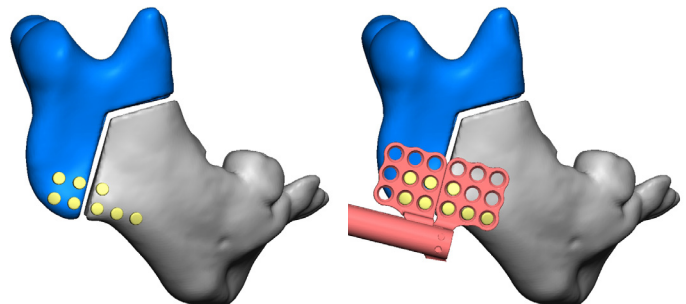
Step 2: Mark Predictive Holes and Osteotomies

- i. Mark the predictive holes.
- ii. Mark the osteotomies along the indicated path.
- iii. Remove the Distractor Marking Guide.



Step 3: Perform Osteotomies

- i. Perform the osteotomies using the marked locations.



Step 4: Fixate Distractor

- i. Fixate the distractor using the marked predictive holes.
- ii. Fixate additional holes as necessary.

