

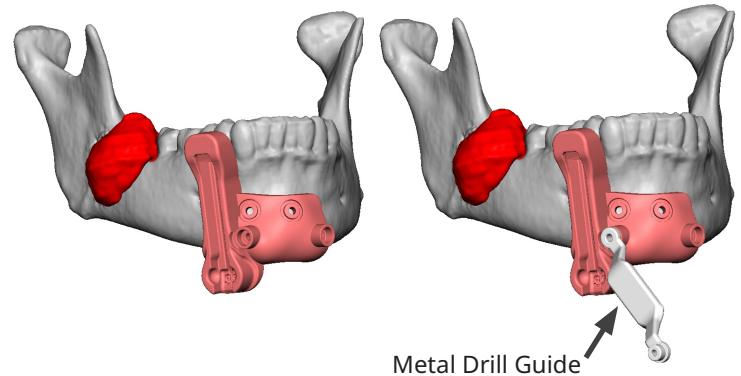
**Place ► Fixate ► Mark ► Osteotomize**

CONSULT ALL APPLICABLE INSTRUCTIONS FOR USE PRIOR TO SURGERY

**Step 1: Place Mandible Cutting Guide**

- i. Confirm that the work order number and patient name on the Mandible Cutting Guide are correct.
- ii. Ensure that the tissue is removed from the bony surface where the Mandible Cutting Guide will register.
- iii. Place the Mandible Cutting Guide and ensure that the guide is contacting the bony surface.

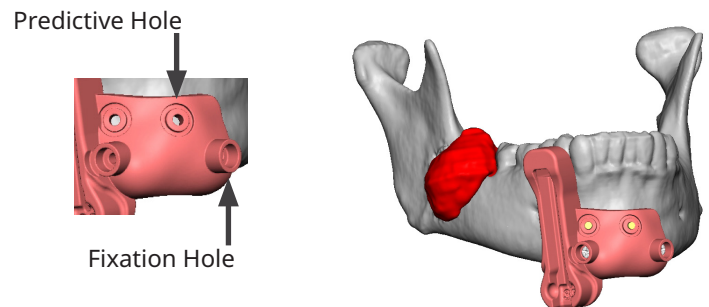
*Note: Refer to the Case Report for patient-specific guide position.*



**Step 2: Fixate Mandible Cutting Guide**

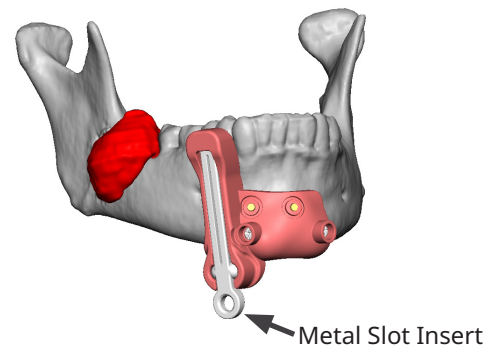
- i. Insert the Metal Drill Guide into the raised drill sleeves on the Mandible Cutting Guide and pre-drill the fixation holes.
- ii. Fixate the Mandible Cutting Guide with 2.0mm screws using all provided fixation holes.

*Note: Refer to the Metal Insert Instructions in the Case Report.*



**Step 3: Mark Predictive Holes**

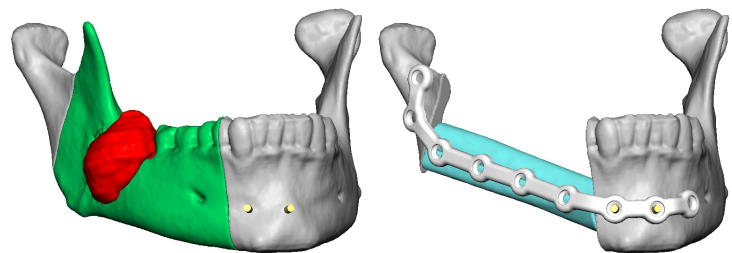
- i. Mark the predictive holes that will align to the Custom Mandible Reconstruction Plate.



**Step 4: Perform Osteotomies**

- i. Fit the Metal Slot Insert into the provided slots in the Mandible Cutting Guide.  
*Note: Use the Metal Slot Insert size indicated on the Mandible Cutting Guide and shown in the Case Report.*
- ii. Perform the osteotomies.
- iii. Remove the fixation screws and the Mandible Cutting guide.
- iv. Using the marked predictive holes, permanently fixate the Custom Mandible Reconstruction Plate.

*Note: Refer to the Stryker IFU and case-specific Design Proposal for screw selection.*



A surgeon must always rely on his or her own professional clinical judgment when deciding whether to use a particular product when treating a particular patient. 3D Systems does not dispense medical advice and recommends that surgeons be trained in the use of any particular product before using it in surgery. The information presented is intended to demonstrate the breadth of 3D Systems product offerings. A surgeon must always refer to the package insert, product label, and/or instructions for use before using any 3D Systems product.