



3DXpert™ for SOLIDWORKS®

Educational Suite

Prepare for the Additive Manufacturing Revolution

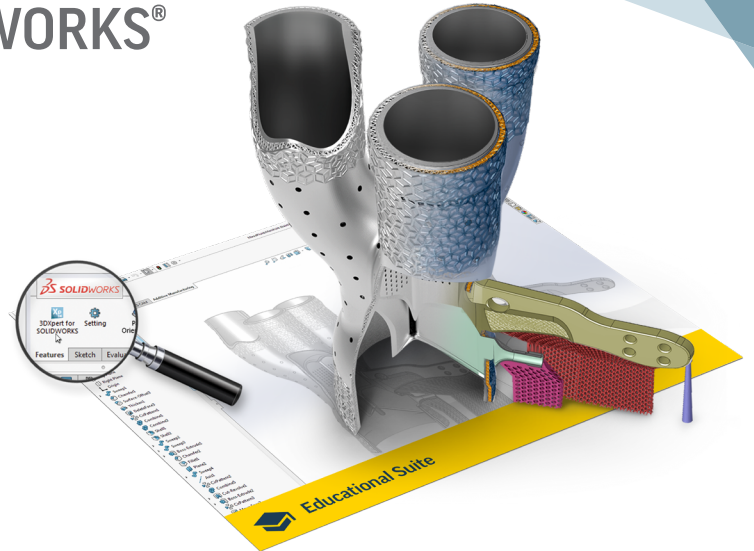
Design with Additive Manufacturing in Mind

Additive manufacturing (AM) opens the door to a new world of opportunities, enabling the production of new shapes with enhanced functional properties that cannot be manufactured using traditional techniques.

To get the most out of the new capabilities, designers must be equipped with the right tools to design with AM in mind. Tools that enable them to best utilize the new capabilities (e.g. lattice structures) and reflect AM considerations (e.g. print orientation). Mastering these skills and capabilities will determine success in the highly competitive and evolving design environment.

3DXpert for SOLIDWORKS

3DXpert for SOLIDWORKS is a complementary software for SOLIDWORKS, providing designers with the tools to bridge the gap between a 3D CAD model and a ready for print model. A click of a button in SOLIDWORKS brings SOLIDWORKS native CAD data directly into 3DXpert for SOLIDWORKS and provides an extensive toolset to easily prepare, analyze and optimize the design for additive manufacturing. Once completed, the ready for print data can be sent to any printer or back to SOLIDWORKS.



3DXpert for SOLIDWORKS Educational Suite

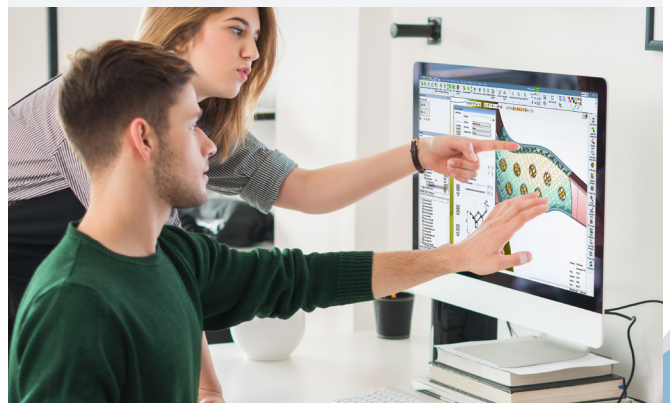


- A teacher license and grant to attend a training course for the lead instructor
- Student licenses for the classroom
- Step-by-step self-explanatory tutorials and exercises

Why Choose 3DXpert for SOLIDWORKS for your Classroom?

3DXpert for SOLIDWORKS Educational suite is the ideal tool to teach students how to design with AM in mind. The comprehensive solution enables the students to learn the different phases of the AM workflow using professional, yet easy to use, tools accompanied by a rich set of self-explanatory step-by-step tutorials.

- **Industry Gold Standard** – used by designers in leading companies in the automotive, aerospace and medical industries.
- **Unmatched Lattice Design Suite** – complete freedom to design your own lattice structures for enhanced functional properties.
- **Integrated Solution** – access the most extensive and professional toolset for the entire AM workflow including integrated build simulation.
- **Easy to Use** – straightforward best practice templates accompanied by self-explanatory tutorials.
- **Productive Learning Environment** – history-based parametric CAD environment to easily trial and assess different design and print approaches.
- **Compatible Solution** – compatible with any printer and 3D CAD design software.



Note: 3DXpert for SOLIDWORKS Educational Edition is to be used exclusively in academic institutes and may not be used for commercial or other for-profit purposes.

Find out more at: www.3dsystems.com/3DXpert4SW

Specifications subject to change without notice. 3D Systems, 3DXpert and the 3D Systems Logo are trademarks of 3D Systems, Inc. All other trademarks are the property of their respective owners.

Copyright © 3D Systems, Inc. All rights reserved. www.3dsystems.com
3DXpert for SOLIDWORKS Educational Suite EN 03/2019

