



3DXpert

Getting started

Software Installation Setup of Printers/Materials

Tutorial_V6 - Updated: 14,0000,1587,751

This document describes how to install 3DXpert and how to download, maintain and manage the printer and relevant materials configuration files for your printer.

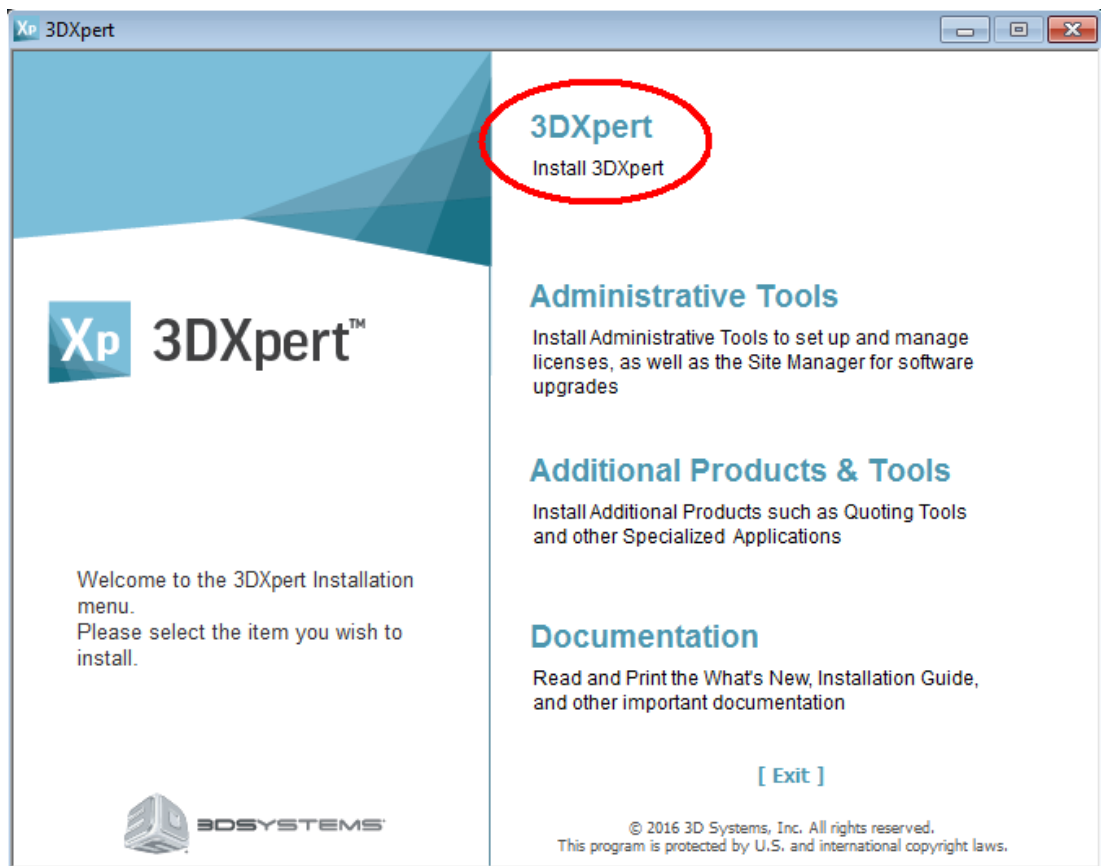
This document complements the Installation Guide provided with the product.

Part 1 – 3DXpert Installation

The following steps explain in short how to install 3DXpert itself.

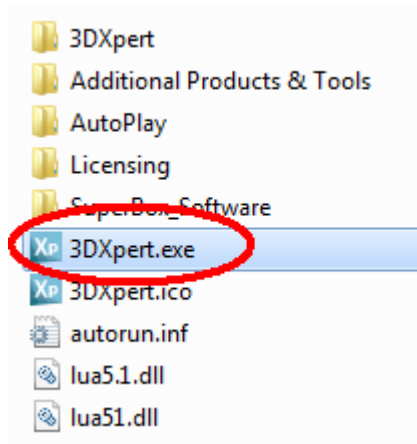
The installations of the products available in the Administrative Tools and Additional Products & Tools sections are not discussed here.

1. Once loading the DVD of 3DXpert on your computer, the following Autorun dialog is launched, allowing you to choose what to install.

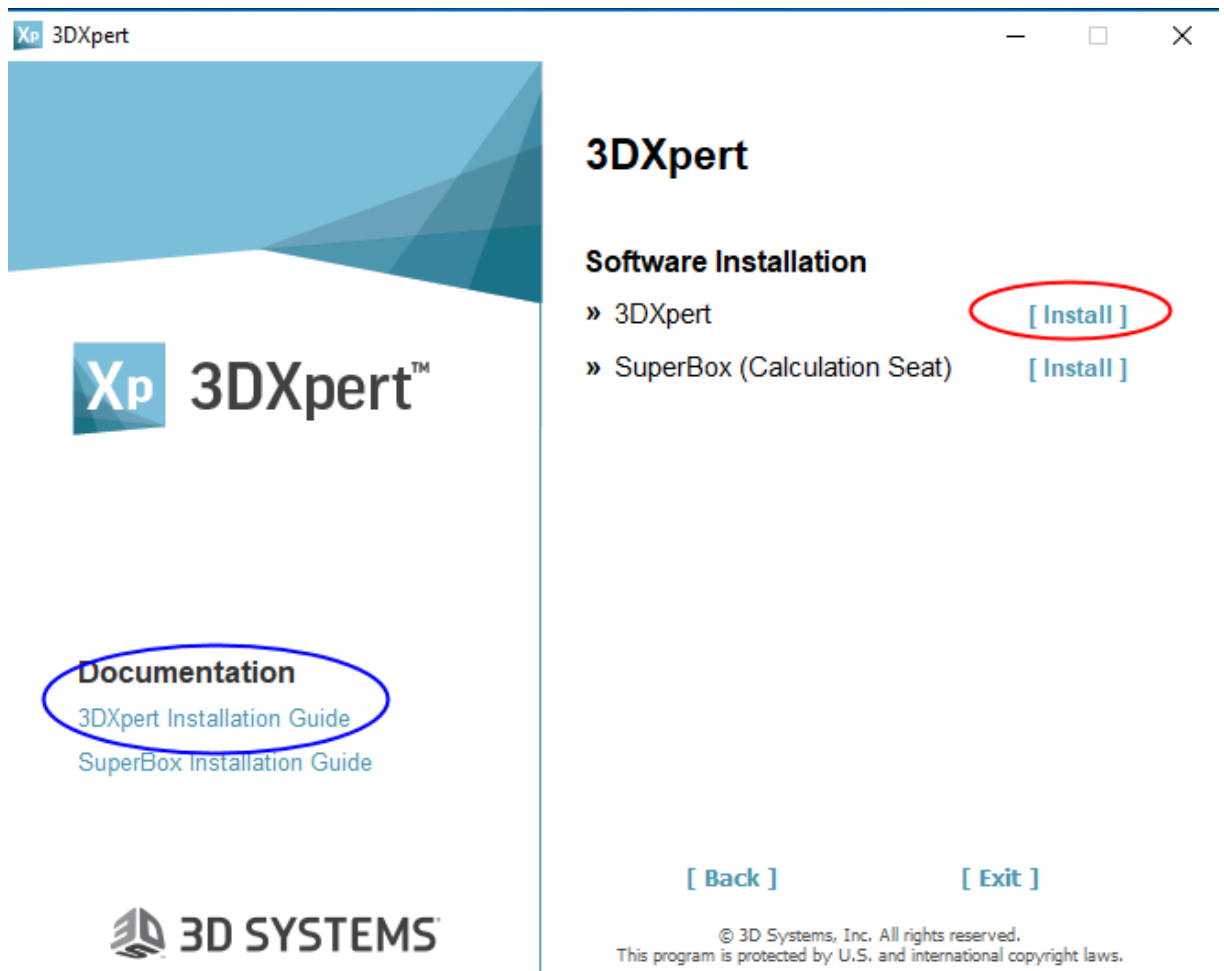


Press on “3DXpert”

Note: If the Autorun dialog is not launched automatically, you can also browse the DVD content and double click the file 3DXpert.exe:

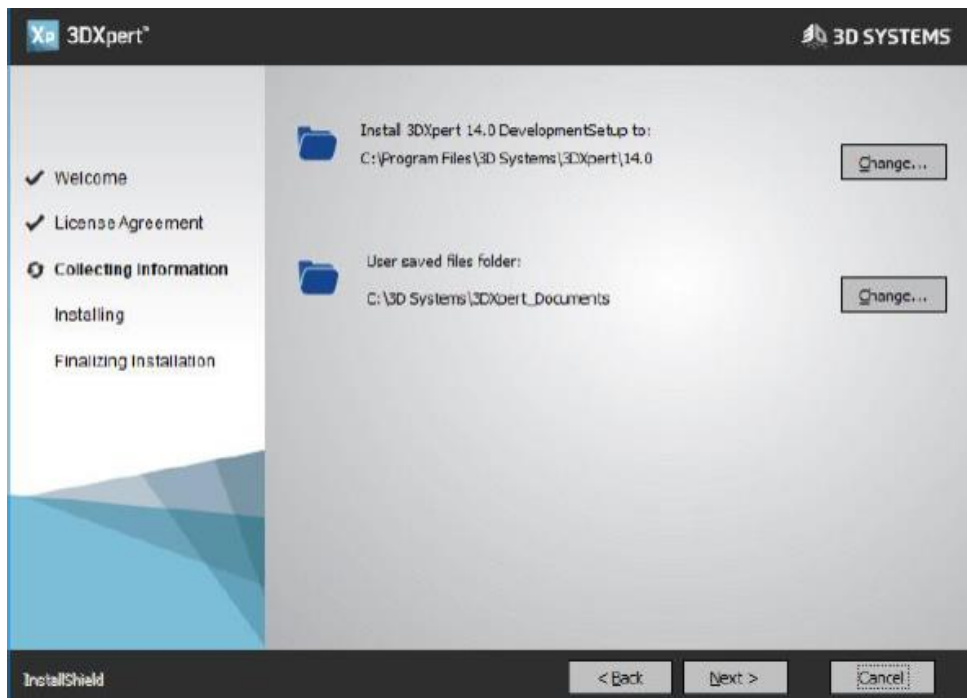


2. In the next page, choose Install (marked in red).



For additional details about the installation press on '3DXpert Installation Guide' (marked in blue).

3. Click the Next button to proceed with the installation steps. Confirm the license agreement and continue to the following stage:



Through this dialog you can change (by pressing on the “Change” button), if needed, the destination folder of the 3DXpert application itself as well as the default folder for your 3D printing projects.

Press “Next” to start the installation process.

4. Towards the end of the installation process, you are asked to invoke the license manager.

To run with a local license, 3DXpert requires :

- a. A hardware Plug (Dongle) which is connected to the computer.
- b. A matching license file. Save the license file for 3DXpert in a dedicated folder.

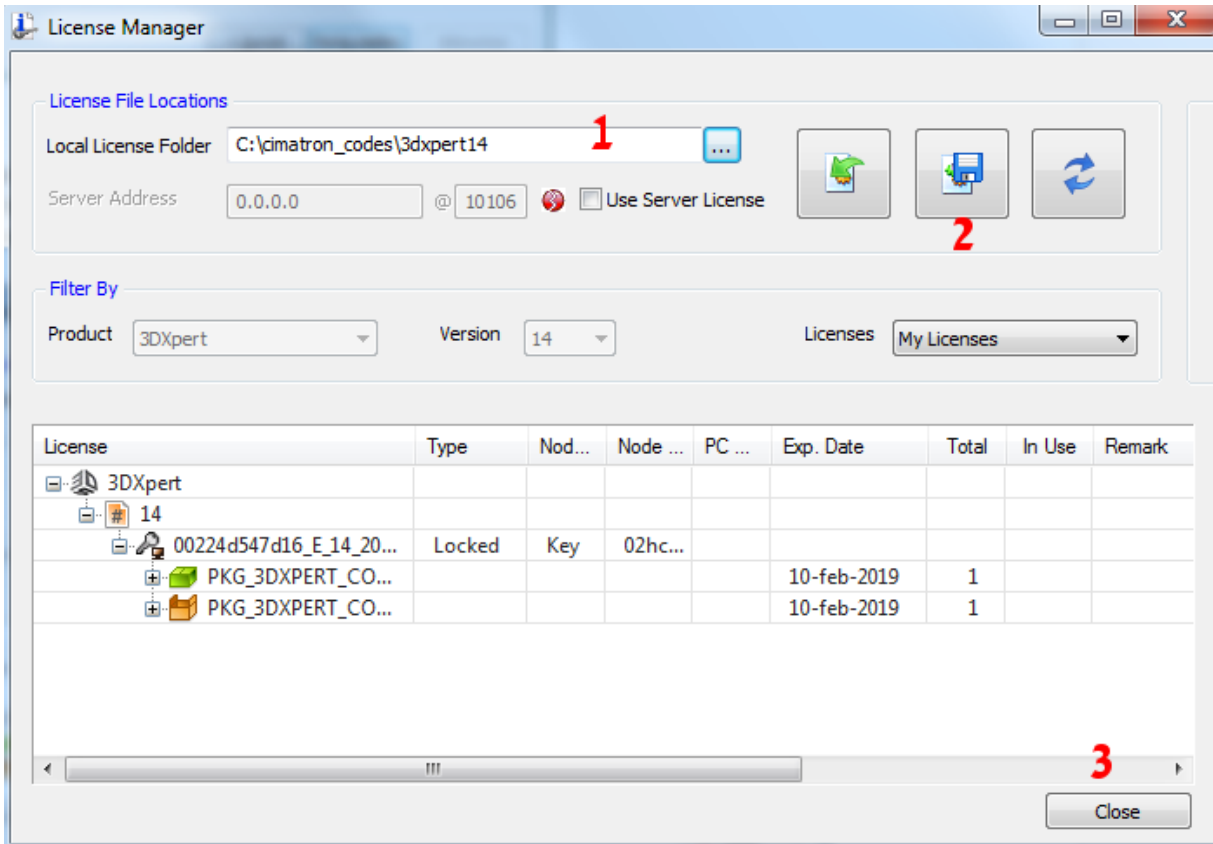
If not already done, connect the plug to your computer.

When done, press on the “Launch the license Manager” button (marked in red).

Alternatively, 3DXpert can run with a floating license, (for more information see the License Guide).

As the License Manager launches, press the  button (1) and select the folder where your license file (*.cml) is located.

Press the Save button (2) and close (3) the License manager.



Press the “Finish” button to finalize the setup.

You have now successfully installed 3DXpert.

Part 2 – 3DXpert Updates

Software updates are available for download on a regular basis.

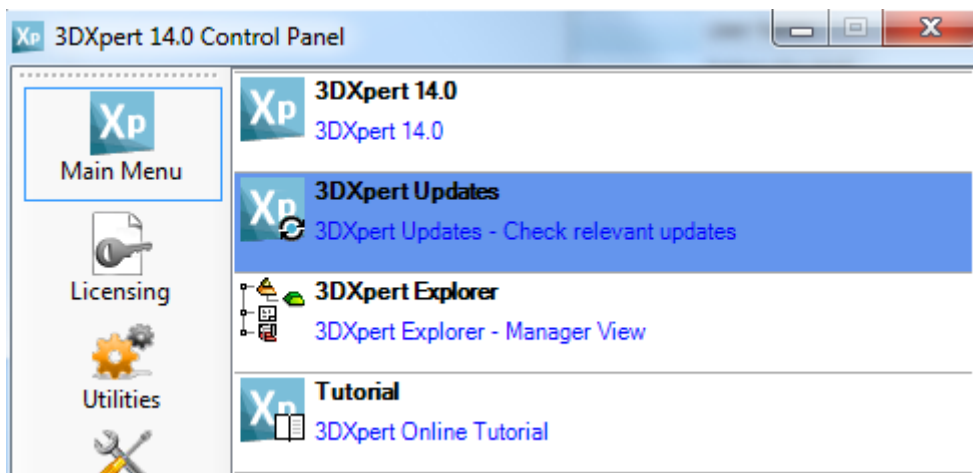
Such updates can include specific software corrections or larger software upgrades

When an update is available for download, a dedicated message comes up at the start of PC or when launching 3DXpert.

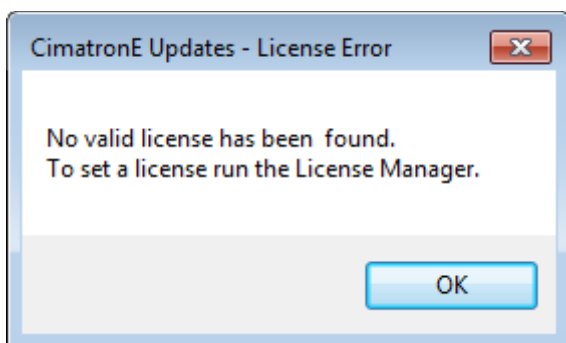
To get the updated, make sure that:

- A 3DXpert plug is connected to your computer and license manager points to a valid license file (*.cml) (or you are connected to a license server)
- Your computer is connected to the internet.

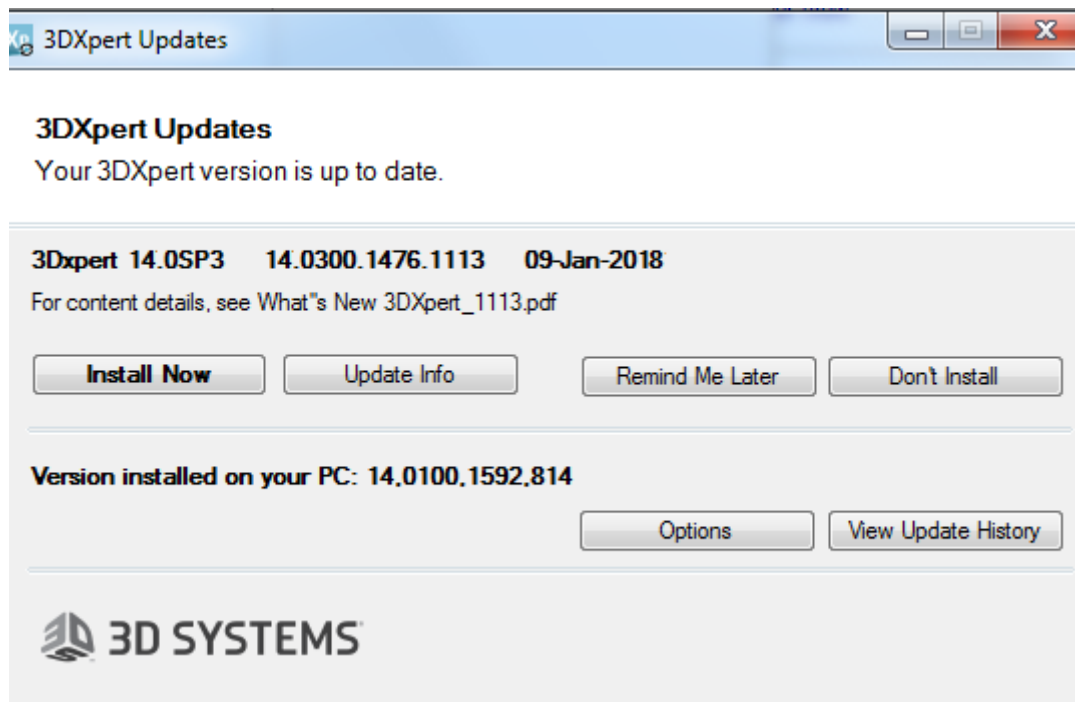
You can also manually check for updates by using **3DXpert Updates** from the 3DXpert Control panel as shown by the following image:



Note: If you manually run the Update Manager and you do not have a valid license, you will get the following message:



If an update for your 3DXpert is available, the 3DXpert Updates dialog pops up with various options and information, as shown in the following image:



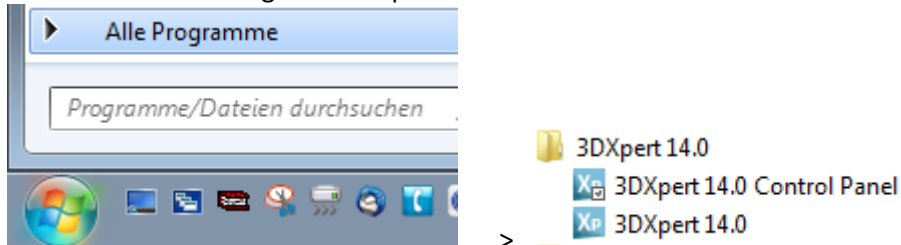
Download the update and follow the instructions of its setup.

Note: After you update your 3DXpert, the same dialog may pop up again showing a subsequent available update.

Part 3 – Setting up your Printer and Materials

Once you have a running installation of 3DXpert, you need to download your Printer and Materials configuration files before you can start working. To do that:

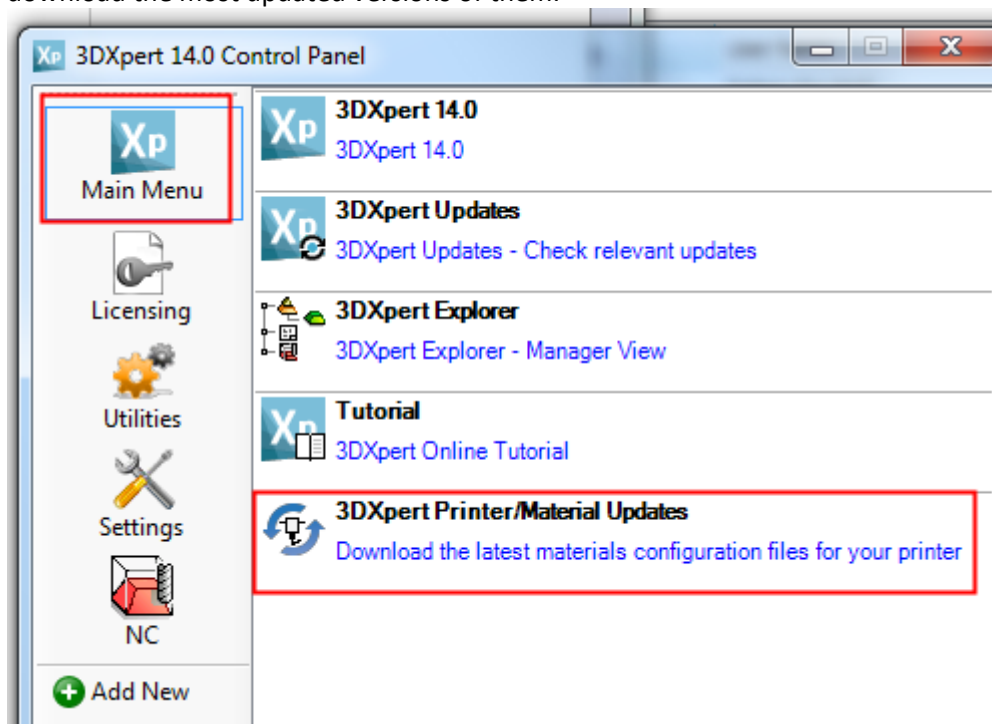
5. Launch the 3DXpert Control Panel.
Find it in Start-All Programs-3DXpert 14.0



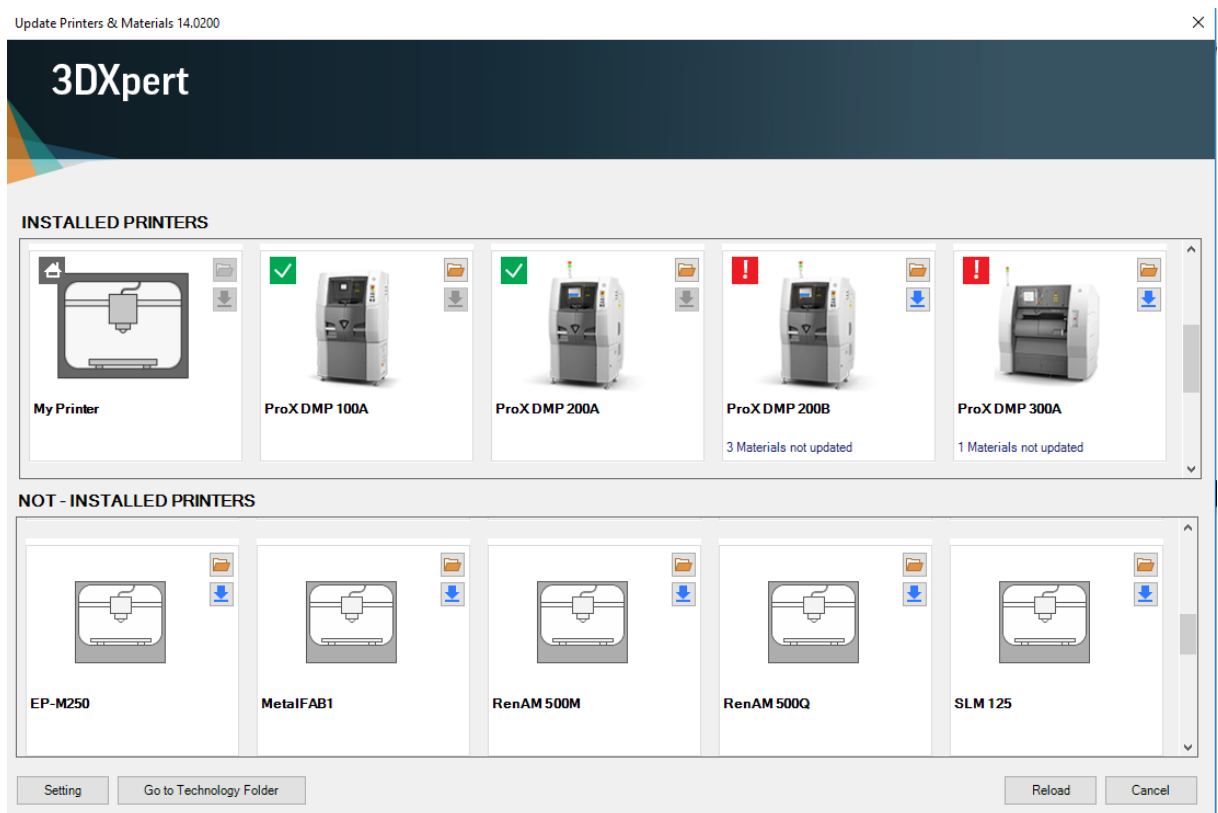
6. In the Main Menu, click the utility 3DXpert Printer/Material Updates.

This tool enables you to download printers and their relevant materials directly from the 3D Systems download server.

Alternatively, if you have already a printer and its material(s) installed, you can check and download the most updated versions of them.



The first (printer list) **Update Printers & Materials** dialog is displayed, showing the current update status of all installed printers and also a list of printers that have not been installed, but are available for downloading.



The dialog consists of two main printer groups:

- **Installed Printers** - 3D printers installed on your computer.
- **Not Installed Printers** - 3D printers that are not installed on your computer but are available for downloading

For each installed printer, the following specific data is displayed indicating its status:



The installed printer appears on the local computer only - it does not appear in the printer server. Since these printers are local, they have no update status, open printer or download button.



The installed printer and its materials are updated.



The installed printer and/or its materials are not updated.

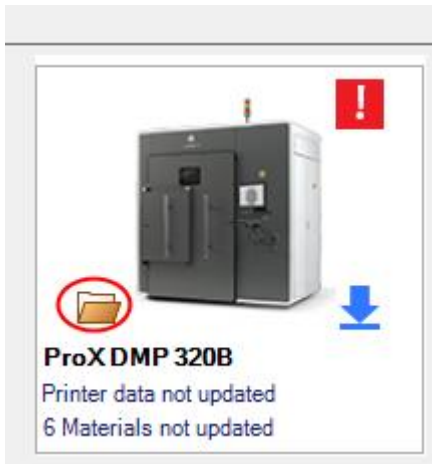
For each printer that is not updated, a text indicates if the printer is not updated and/or the number of materials that are not updated (if any).



The installed printer exists on the server, but you do not have a valid license to use it

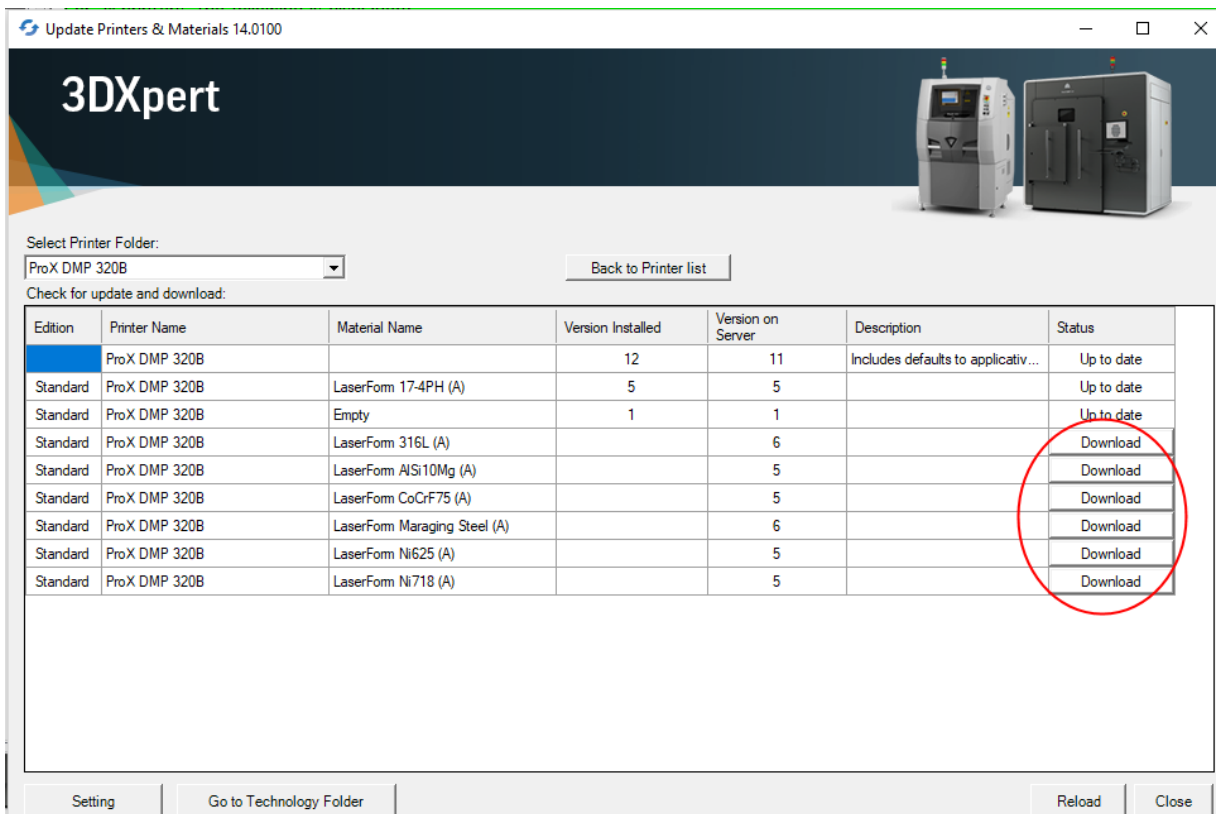
Database files for other printers are available as well (like EOS, SLM etc...).

Open the printer. This displays detailed information on the specific printer and its installed materials.



Notice that the table displays all the materials available on the web server and if exist, also materials already installed on your 3DXpert.

Click the Download button alongside the relevant material.



Each row represents a material and the following details:

- Edition – Type of material (Baseline/Standard). See more below*
- Printer Name - Name of the printer
- Material Name - Name of the material
- Version Installed - The version of the printer/material installed on your PC (if installed already)

- Version on Server - The latest version of the printer/material which is available for download
- Description - Comments on printer/material
- Status –Indicating if this material is available for download from the server and if yes, the download button is shown here. See more below**

***Additional data regarding the Edition of materials:**

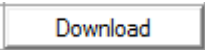
There are different types of materials:

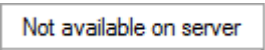
- Baseline Materials
 - Baseline materials do not require a dedicated material license, so they can be used by every 3DXpert user.
 - A Baseline material is provided by 3D Systems with a very basic set of parameters in order to print a basic part.
 - You have full access to edit/update all the Slicing parameters.
 - Once resaved, they can only be used on the same PC.

- Standard (Certified)
 - Standard materials are certified materials provided by the printer vendor (e.g. 3D Systems) and require related dedicated license material for each material.
 - These materials are released as validated materials.
 - Editing of Standard materials is limited.
 - Any change in such a material makes it Non-Validated.

- Empty Materials
 - An Empty material is of type Baseline material. It does not require a dedicated material license.
 - Such a database does not include meaningful parameters. This is like a clean sheet of paper.
 - You have full access to edit/update all the Slicing parameters.


**** Additional data regarding the Status Column:**

In case you have either not installed a certain printer/material or in case a newer version is available for download on the server, (Version installed < Version on Server) then you can download a material by pressing the  button.

In case the material installed on your PC is no longer available on the server, the status will be: .

It is recommended to use such materials with caution; as such materials may not be supported by your current version of 3DXpert any longer. See how to delete a printer/material from your PC later on in this document.

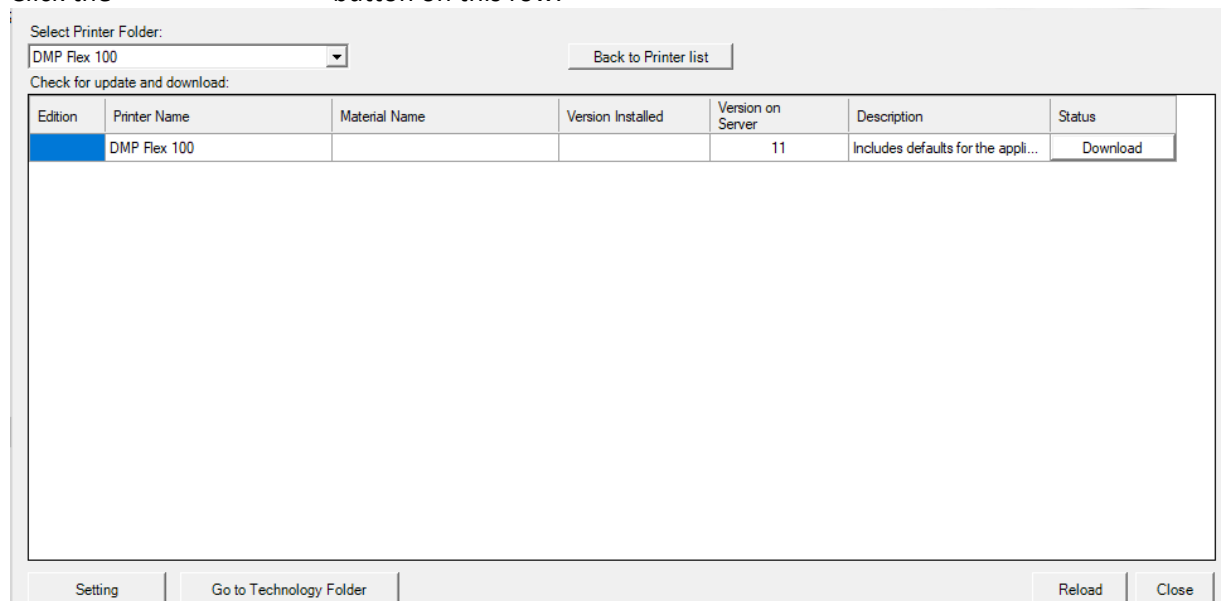
The default Technology settings folder is
 C:\ProgramData\3D Systems\3DXpert\14.0\Data\3D_Printing\Technology_Folder
 You can set a different folder, also a folder located on your network.

To change the default destination Technology folder, press  at the lower left corner of the dialog and define a different folder.

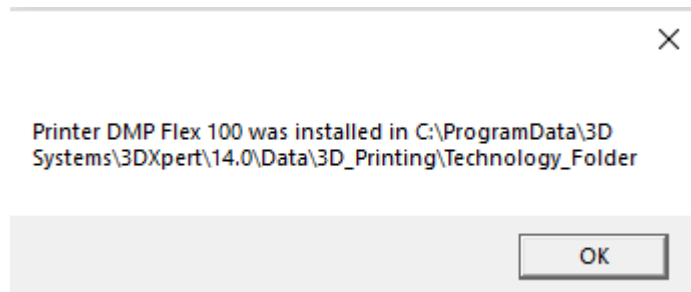
Installing a Printer:

3D Systems Printer database files are supplied with the 3DXpert installation. However, if the printer is missing from your PC or if you wish to install an additional printer, enter the Printer and Materials download tool and select the printer to download. Since the printer is not yet installed on your PC, only one line will show for this printer.

Click the  button on this row.

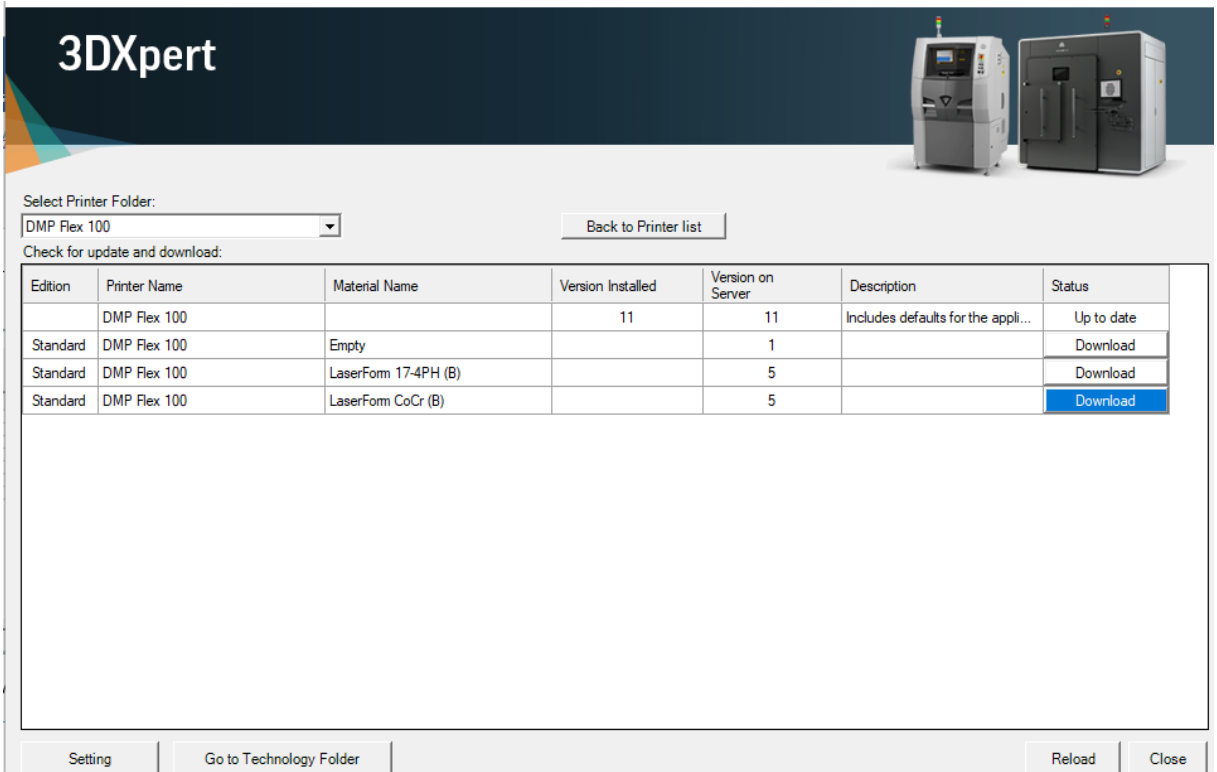


This downloads and installs the printer definition files. At the end, the message come up:



This Printer installation does not include the material databases for this printer, so these should be downloaded separately.

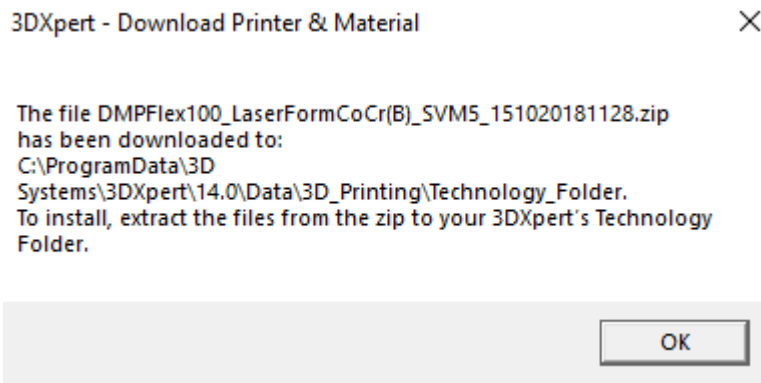
Now download separately the required Baseline or Standard Materials by pressing the download buttons of each.



The screenshot shows the 3DXpert software interface. At the top, there's a header with the 3DXpert logo and an image of two 3D printers. Below the header, there's a section for selecting a printer folder, currently set to 'DMP Flex 100'. A 'Back to Printer list' button is visible. The main area is a table titled 'Check for update and download:' with columns for Edition, Printer Name, Material Name, Version Installed, Version on Server, Description, and Status. The table contains four rows of material data. The last row, 'LaserForm CoCr (B)', has a blue 'Download' button. At the bottom, there are buttons for 'Setting', 'Go to Technology Folder', 'Reload', and 'Close'.


Edition	Printer Name	Material Name	Version Installed	Version on Server	Description	Status
	DMP Flex 100		11	11	Includes defaults for the appli...	Up to date
Standard	DMP Flex 100	Empty		1		Download
Standard	DMP Flex 100	LaserForm 17-4PH (B)		5		Download
Standard	DMP Flex 100	LaserForm CoCr (B)		5		Download

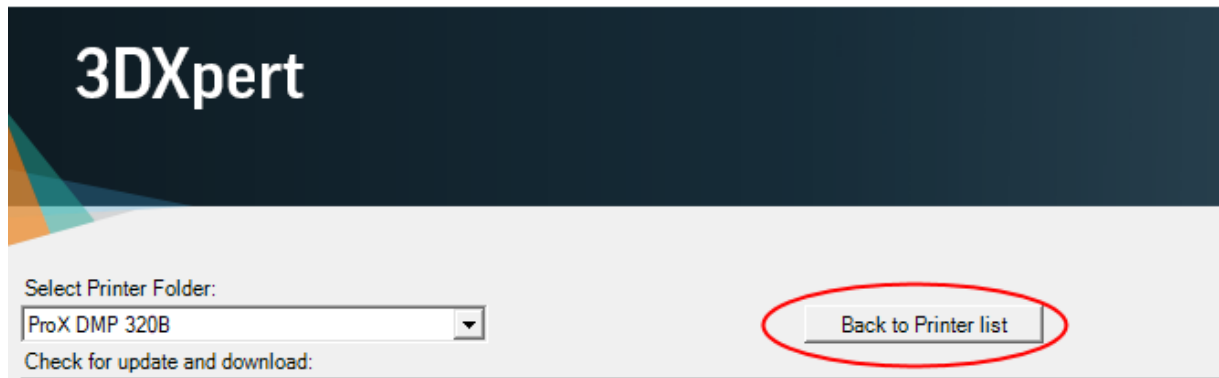
Once the download of each material database is over, the following message shows up:



The dialog box has a title bar '3DXpert - Download Printer & Material' and a close button (X). The main text reads: 'The file DMPFlex100_LaserFormCoCr(B)_SVM5_151020181128.zip has been downloaded to: C:\ProgramData\3D Systems\3DXpert\14.0\Data\3D_Printing\Technology_Folder. To install, extract the files from the zip to your 3DXpert's Technology Folder.' At the bottom, there is an 'OK' button.

7. Launch Windows explorer and browse to the destination folder. If you did not change the default folder in the previous step, the ZIP files were downloaded to this path:
C:\ProgramData\3D Systems\3DXpert\14.0\Data\3D_Printing\Technology_Folder
8. Move the downloaded zip file to the printer folder and extract it. Make sure to keep its structure, as any material database is a folder.
9. Note that you may return to the initial dialog displaying the list of printers and the status, using the Back to Printer list button

 Update Printers & Materials 14.0100



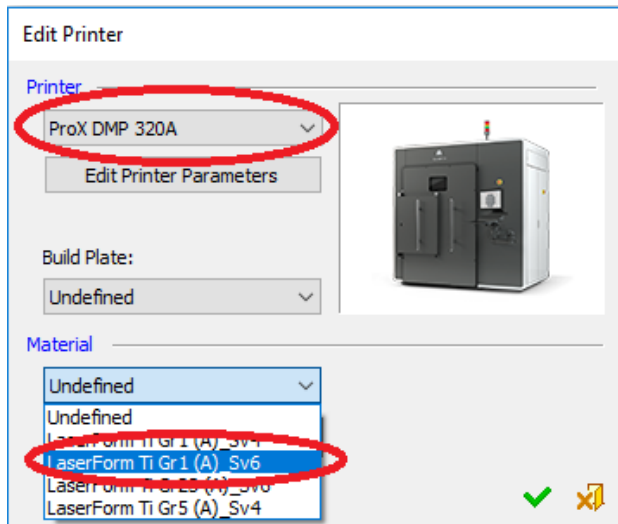
10. To download the entire printer folder (including printer information and all materials) to the download folder specified in the Setting button, press the **Download Entire Printer** button.



Part 4 – Managing Printer and Materials

11. Although it is recommended to keep the standard folder names, as long as the contents of the folder are correct, the **Update Printers & Materials** tool does not require that the name for the folder will be exactly the same as the standard printer name. The folder names that you designate for printers and materials will be visible in the 3DXpert's Printer interaction.

This allows you to define/optimize your own Buildstyles and place in different folders.



To remove a material or printer from your PC, enter the Technology folder and delete the folder itself.

Note on Training Materials:

In order to go through some of the tutorials of 3DXpert, use the material database files for the printer called 'ProX DMP Training' should be used. This printer is a virtual printer and is supplied with the training kit.

Although the name of a real printer will show on the tray, its parameters are not practical to any current real printer and are not ready for actual printing.

After the installation of 3DXpert, install the contents of the file 'ProX DMP Training.rar' to the folder -

C:\ProgramData\3D Systems\3DXpert\14.0\Data\3D_Printing\Technology_Folder